



Certified Emissions Reduction Leader for Commercial Buildings

What is EEC Professional Certifications?

EEC Professional Certifications is an umbrella certification framework, under which multiple certifications sit, including:

- **Certified Emissions Reduction Leader for Commercial Buildings**
- **Certified EnMS Advisor**
- **Certified Insulation Installer**

It demonstrates the EEC's ongoing commitment to developing the future energy and related services workforce for Australia.

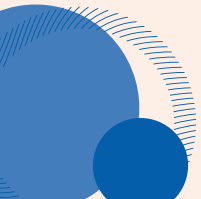


eec CERTIFIED
emissions reduction
leader

About this certification

Individuals certified as a Certified Emissions Reduction Leader for Commercial Buildings deliver integrated commercial building energy retrofits (IBERs).

IBERs are a total building retrofit, integrating a range of technologies to deliver substantial energy savings. They are often complicated projects that require managing multiple technical professionals from various construction and energy efficiency fields. CERL doesn't certify these technical professionals but recognises individuals with the knowledge and capabilities to lead and manage them to deliver an integrated building energy retrofit.





What is a Certified Emissions Reduction Leader for Commercial Buildings?

A CERL is a skilled and experienced practitioner of commercial building energy upgrades, up to integrated building energy retrofits (IBERS).

Since 2013, practitioners have been able to be independently certified. EEC Professional Certifications replaces the Energy Efficiency Certification Scheme (EECS) launched by the EEC in 2013, and continues to certify professionals who can lead integrated commercial building energy retrofits.

Why get EEC Certified?

Certification gives individuals independent recognition of their knowledge and skills.

Certified individuals join a community of trusted experts working to improve standards and practices in the energy and related services sector. Certification shows you have the expertise to lead integrated commercial building energy retrofits and sets you apart from other practitioners.

What levels of certification are there?

CERL offers two levels of certification to recognise different depth of knowledge and experience in the implementation of integrated building energy retrofits:



Certified Emissions Reduction Leader for Commercial Buildings

Certification as a CERL is available if you have experience as a member of a project team that has implemented energy efficiency retrofits of commercial buildings.

Certification demonstrates you have:

- the ability to contribute to effective IBERs as part of a project team, and
- the knowledge to lead and manage standard IBERs.



Certified Emissions Reduction Leader for Commercial Buildings at the Advanced level

Certification as a CERL at the Advanced level is available if you have experience leading all stages of IBERs.

Certification demonstrates you have the knowledge, capabilities and practical experience to lead and manage both standard and complex IBERs in their entirety.

How to apply

You can apply for certification as a Certified Emissions Reduction Leader for Commercial Buildings at eecertified.org.au.



Find out more and apply at eecertified.org.au

You must meet the pre-requisites for certification before an application is considered. Meeting the pre-requisites does not guarantee you will be certified, it means your application will be assessed in detail.

As a candidate for certification you must demonstrate you have experience working on energy efficiency retrofits of commercial buildings. There are different requirements depending on the level of certification for which you are applying.



Contact us

eecertified.org.au
certifications@eec.org.au



eec

professional
certifications